

[The IB Diploma Programme: A broad and balanced education on Vimeo](#)

[The IB Diploma Programme: A broad and balanced education on Vimeo](#)





IB LEARNER PROFILE

The aim of all IB programmes is to develop internationally-minded people who, recognising their common humanity and shared guardianship of the planet, help to create a better and more peaceful world. IB learners strive to be:

Reflective

Give thoughtful consideration to your own learning and experience. You are able to assess and understand your strengths and limitations in order to support your learning and personal development.

Open-minded

Understand and appreciate your own culture and personal histories, and are open to the perspectives, values and traditions of other individuals and communities. You seek and evaluate a range of points of view, and you are willing to grow from the experience.

Risk-takers

Approach unfamiliar situations and uncertainty with courage and forethought, and have the independence of spirit to explore new roles, ideas and strategies. You are brave and articulate in defending your beliefs.

Caring

Show empathy, compassion and respect towards the needs and feelings of others. You have a personal commitment to service, and act to make a positive difference to the lives of others and to the environment.

Balanced

Understand the importance of intellectual, physical and emotional balance to achieve personal well-being for yourself and others.

Knowledgeable

Explore concepts, ideas and issues that have local and global significance. In so doing, you acquire in-depth knowledge and develop understanding across a broad and balanced range of disciplines.

Inquirers

Have a natural curiosity and learn to acquire the skills necessary to conduct inquiry and research and show independence in learning. You actively enjoy learning and this love of learning will be sustained throughout their lives.

Communicators

Understand and express ideas and information confidently and creatively in more than one language and in a variety of modes of communication. You are willing to work in collaboration with others.

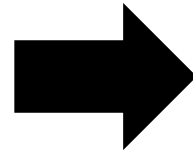
Thinkers

Exercise initiative in applying thinking skills critically and creatively to recognise and approach complex problems, and make reasoned, ethical decisions.

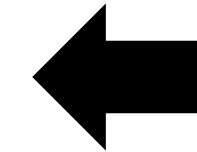


Abitur- GIB-IB

Abitur



GIB



IB

- The traditional German school-leaving certificate, typically earned at a Gymnasium.
- It follows the national curriculum and state standards
- The focus is on preparing students for university studies in Germany through a series of standardized exams.
- Focus on national syllabus

- An international variant that integrates elements of the IB Diploma Programme with the German education system.
- It features bilingual instruction and...

...incorporates additional components such as Theory of Knowledge, the Extended Essay, and Creativity, Activity, Service (CAS).
Emphasizes interdisciplinary learning, critical thinking, and a global perspective, making it well-suited for students considering higher education abroad.
Focus on international syllabus

Studies in Germany

1. German SL,
2. English HL,
3. History **SL, HL**
4. Maths SL,
5. Biology HL,
6. Chemistry HL,
6. Visual Arts HL
6. Business SL

+ TOK (Theory of Knowledge)
and CAS (Creativity, Activity,
Service)

Exams are marked externally
after 2 years (May Exams)

German A SL
Englisch B HL
History SL
Maths SL
Biology HL
Chemistry HL, Visual Arts, HL

German A SL
Englisch B HL
History HL
Maths SL
Biology HL
**Chemistry SL, Visual Arts SL,
Business SL**

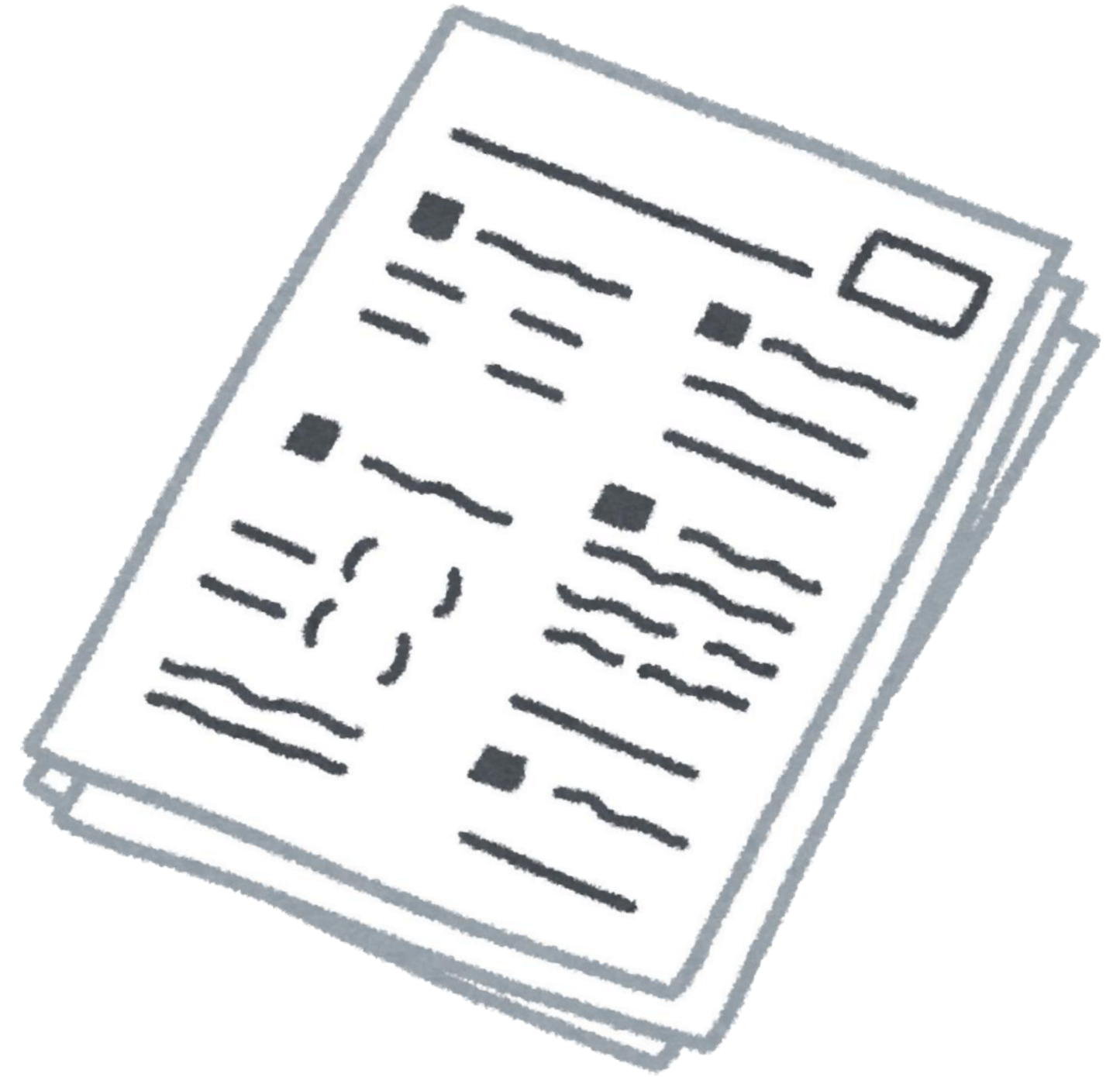
internationally

Medicine:
German A SL
Englisch B HL
History SL
Maths SL
Biology HL
Chemistry HL

Any other studies :
6th subject is
depending on the
individual requirements

ASSESSMENT PROCEDURES IN THE IB DIPLOMA PROGRAMME

Overview of Assessment



01.

EXTERNAL ASSESSMENT P1/P2 75%–80% (1–7)

- *Set and marked externally by IB examiners.*
- *Covers content and skills specified in subject guides.*
- *Consists of various question formats (e.g., essays, short-answer questions).*
- *in April/May of the second year*

02.

INTERNAL ASSESSMENT (IA) 20%–25% (1–7)

- *Completed by students in each subject under teacher supervision.*
- *Assessed by teachers according to IB criteria.*
- *Contributes to final grade in each subject*

03.

EXTENDED ESSAY AND THEORY OF KNOWLEDGE (TOK) 3 P

- *Independent research on a chosen topic.*
- *Supervised by a teacher.*
- *4,000-word essay assessed externally by IB examiners.*
- *Explores the nature of knowledge across disciplines.*
- *Focuses on critical reflection and evaluation.*
- *Internally assessed and externally moderated.*

a grade will be generated from both components

The Difference between IB and GIB

GIB

No Grade 2 in any subject

No more than one grade 3 that can be levelled with 5 points at the same level



IB

Achieve a minimum total of 24 points.

Accumulate at least 12 points from HL subjects.

Accumulate at least 9 points from SL subjects.

No grade of 1 in any subject.

No more than two grades of 2 (HL or SL).

No more than three grades of 3 or below (HL or SL).

Complete all CAS requirements.

No "N" (no grade) awarded for TOK, EE, or any subject.

No grade of E awarded for TOK and/or the EE.

No penalty for academic misconduct.

What are the requirements for my child to be accepted into the IB programme?

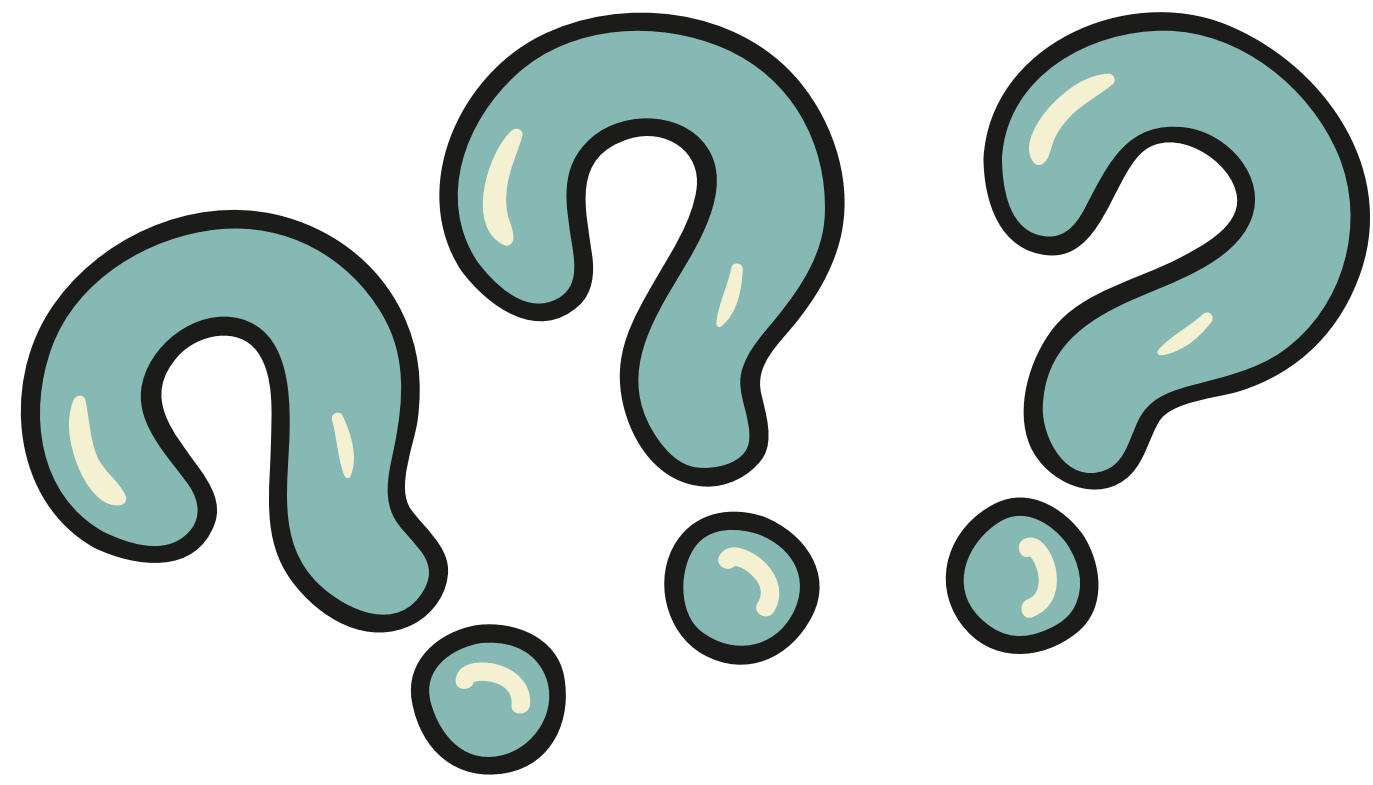
- Excellent knowledge of English language
- Outstanding social and academic behaviour
- Work independently and take responsibility for your own work.
- A passing score on the MSA at the secondary school level
- Ultimately, the decision is made by the class conference.
- In exceptional cases, Realschule students may also be considered.
- Please note that the school is not obliged to accept students into the IB programme after the 10th grade.

Can my child automatically study in Germany with the IB Diploma?

- With the GIB yes, with the IB limited, please enquire at the respective university
- Please inform yourself in advance about study visas for non-German passport holders

What does admission to a German university depend on?

- In Germany there are admission-limited degree programmes, the overall grade is decisive. Admission-free degree programmes are open to all applicants.
- The GIB grade is converted to the German grading system



**Time for your
Questions**





FEEL FREE TO CONTACT ME

karnebogen.julia@ds-doha.de

gib@ds-doha.de